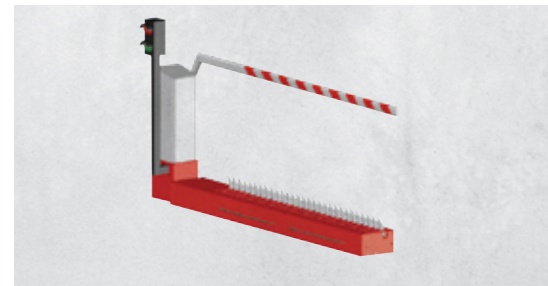


# TRAFFIC AND PARKING SYSTEMS SPIKES, BARRIER GATES AND COMPONENTS

Your comprehensive product offering  
for traffic and parking applications.



TRAFFIC AND PARKING  
SYSTEMS PRODUCT LINE  
SPIKES, BARRIER  
AND COMPONENTS

**LiftMaster**



# LIFTMASTER® ADVANTAGES

## Top-down modular design

- Extremely easy to remove debris & service
- Mechanism is up out of water or debris

## Specifically engineered fishhook tooth design

- Will not harm tire going the correct direction- no tire chipping
- When challenged, it rips through the tire for maximum damage

## A TOTAL SOLUTION FOR EVERY APPLICATION

LiftMaster has everything you need to deliver an integrated access solution to every customer. From gate operators and accessories to access control, our products are engineered to work together as one seamless system.



### GATE OPERATORS

With state-of-the-art technology and a strong, rugged construction, you can rely on our gate operators to give you access anytime you need it.



### ACCESS CONTROL

With entry systems to keypads, card readers to perimeter alert systems, our lineup of feature-rich solutions provides the perfect access system for your needs.



### SAFETY ENTRAPMENT PROTECTION

LiftMaster has engineered our operators and monitored safety entrapment protection devices to work together as a UL 325 compliant system.



### GATE HARDWARE

Our comprehensive line of hinges, wheels, covers and guide rollers are engineered for durability, providing trouble-free operation for your customers.





# TABLE OF CONTENTS



## MANUAL TRAFFIC AND PARKING SYSTEMS

- PG. 5 | SECURE MOUNT IN-GROUND SYSTEM
- PG. 6 | EASY MOUNT IN-GROUND SYSTEM
- PG. 7 | CONCEALED MOUNT IN-GROUND SYSTEM
- PG. 7 | NON-PASSIVE IN-GROUND SYSTEM
- PG. 8 | SURFACE MOUNT MANUAL SYSTEM
- PG. 9 | LOW PROFILE MANUAL SYSTEM
- PG. 9 | NON-PASSIVE MANUAL SYSTEM



## MOTORIZED TRAFFIC AND PARKING SYSTEMS

- PG. 11 | IN-GROUND MOTORIZED TRAFFIC SYSTEM
- PG. 11 | SURFACE MOUNT MOTORIZED TRAFFIC SYSTEM

## MANUAL BARRIER GATES

- PG. 13 | MANUAL LIFT BARRIER GATES
- PG. 14 | MANUAL SWING BARRIER GATES



## ACCESSORIES FOR TRAFFIC AND PARKING SYSTEMS

- PG. 16 | WARNING ALERTS
- PG. 16 | MOUNTING POST
- PG. 17 | STOP AND GO SIGNAL
- PG. 17 | INSTALLATION HARDWARE
- PG. 18 | HEATERS
- PG. 18 | SPEED BUMPS
- PG. 19 | INSTALLATION DO'S AND DON'TS

# MANUAL TRAFFIC AND PARKING SYSTEMS

Whether you're looking for security, privacy, traffic control or all of the above, our Parking and Traffic Solutions come with advanced features and state-of-the-art equipment to help you manage traffic flow quickly and securely.



## HOW TO ORDER

### 1 | CHOOSE A MODEL

1 1 3 0 0

### 2 | SELECT A FINISH

1 1 3 0 0 P



POWDER  
COATED  
RED



POWDER  
COATED  
YELLOW



CORROSION  
RESISTANT\*  
RED



CORROSION  
RESISTANT\*  
YELLOW

### 3 | ORDER

To place your order visit:  
[Dealer.LiftMaster.com](http://Dealer.LiftMaster.com)

Call 800.323.2276

Email [Customer.Service@LiftMaster.com](mailto:Customer.Service@LiftMaster.com)

Contact your LiftMaster®  
Sales Representative

# IN-GROUND MANUAL

Designed and engineered to allow traffic to flow in a single direction, the Cobra™ System is mechanically activated with a counter-balanced back-up system for reliable, low maintenance operation.

## SECURE MOUNT



**In-ground installation.  
Excavation required.**

### STANDARD DUTY



**Type:** Standard Duty  
**Material:** Steel Top Plate  
 (0.25 in.)  
**Length/Weight:** 3 ft. Sections  
 (80 lbs. ea.)  
**Load Rate:** 15,000 lbs. per  
 Single Axle Load  
**Finish:** P PY C CY



**Type:** Standard Duty  
**Material:** Steel Top Plate  
 (0.25 in.)  
**Length/Weight:** 6 ft. Sections  
 (166 lbs. ea.)  
**Load Rate:** 15,000 lbs. per  
 Single Axle Load  
**Finish:** P C

### HEAVY DUTY



**Type:** Heavy Duty  
**Material:** Steel Top Plate  
 (0.375 in.)  
**Length/Weight:** 3 ft. Sections  
 (122 lbs. ea.)  
**Load Rate:** 40,000 lbs. per  
 Single Axle Load  
**Finish:** P C



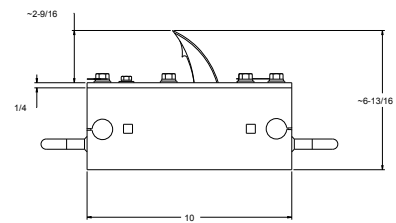
**Type:** Heavy Duty  
**Material:** Steel Top Plate  
 (0.375 in.)  
**Length/Weight:** 6 ft. Sections  
 (251 lbs. ea.)  
**Load Rate:** 40,000 lbs. per  
 Single Axle Load  
**Finish:** P C

### FEATURES

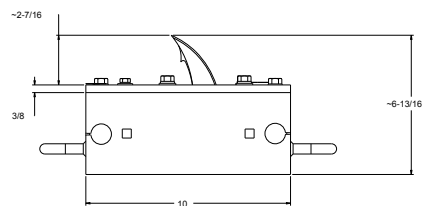
- Top-down design for easy maintenance
- Curved tooth, fishhook design
- Zinc plated moving parts
- Stainless steel hardware
- Reliable counter-balanced system
- Sound dampeners
- Built-in latch down device



STANDARD DUTY



HEAVY DUTY



\*Hot Dipped Galvanized - ASTM A123/A123M

# IN-GROUND MANUAL

## EASY MOUNT



**Install in less than 3 hours.**  
Minimal excavation required, epoxy into place in asphalt or concrete.

### FEATURES

- Top-down design for easy maintenance
- Curved tooth, fishhook design
- Zinc plated moving parts
- Stainless steel hardware
- Reliable counter-balanced system
- Sound dampeners
- Built-in latch down device

## STANDARD DUTY



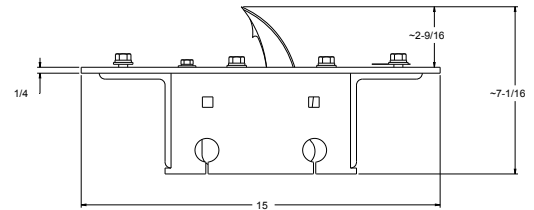
**Type:** Standard Duty  
**Material:** Steel Top Plate (0.25 in.)  
**Length/Weight:** 3 ft. Sections (111 lbs. ea.)  
**Load Rate:** 20,000 lbs. per Single Axle Load  
**Finish:** **P** **C**



**Type:** Standard Duty  
**Material:** Steel Top Plate (0.25 in.)  
**Length/Weight:** 6 ft. Sections (225 lbs. ea.)  
**Load Rate:** 20,000 lbs. per Single Axle Load  
**Finish:** **P** **C**



STANDARD DUTY



## HEAVY DUTY

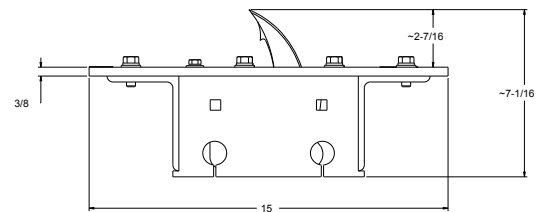


**Type:** Heavy Duty  
**Material:** Steel Top Plate (0.375 in.)  
**Length/Weight:** 3 ft. Sections (139 lbs. ea.)  
**Load Rate:** 40,000 lbs. per Single Axle Load  
**Finish:** **P** **C**



**Type:** Heavy Duty  
**Material:** Steel Top Plate (0.375 in.)  
**Length/Weight:** 6 ft. Sections (285 lbs. ea.)  
**Load Rate:** 40,000 lbs. per Single Axle Load  
**Finish:** **P** **C**

HEAVY DUTY



# IN-GROUND MANUAL

## CONCEALED MOUNT



**Below-grade teeth stay submerged until activated by wrong-way traffic.** Only then is the barbed tooth exposed, puncturing the tire of the offending vehicle.

### HEAVY DUTY

1 1 3 4 1 C

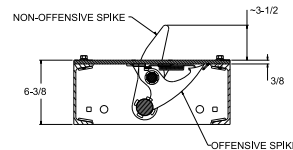
**Type:** Heavy Duty  
**Material:** Steel Top Plate (0.375 in.)  
**Length/Weight:** 3 ft. Sections (80 lbs. ea.)  
**Load Rate:** 25,000 lbs. per Single Axle Load  
**Finish:** Corrosion Resistant\* Red

### FEATURES

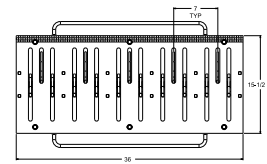
- Above-grade non-penetrating teeth and below-grade penetrating teeth
- Durable spring-loaded teeth with counter-balanced back-up



SIDE VIEW



TOP VIEW



## NON-PASSIVE



**Stops traffic in both directions.** Control box locks all spikes in up or down position.

1 3 2 4 0 P-11

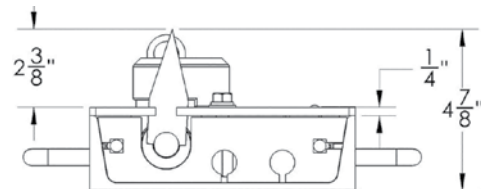
**Type:** Non-Passive In-Ground Manual Traffic System  
**Material:** Steel Top Plate (0.375 in.)  
**Length/Weight:** Total 11 ft. (270 lbs.) consists of (3) 3 ft. extensions  
**Load Rate:** 36,000 lbs. per Single Axle Load  
**Finish:** Powder Coated Red

1 3 1 0 0 XP

**Type:** 3 ft. Extension for Non-Passive In-Ground Manual Traffic System  
**Length/Weight:** Can be Combined up to 24 ft. (90 lbs. ea.)  
**Load Rate:** 36,000 lbs. per Single Axle Load  
**Finish:** Powder Coated Red

### FEATURES

- Stops unwanted entry or exit
- Modular extensions up to 24 ft.



\*Hot Dipped Galvanized - ASTM A123/A123M



# SURFACE MANUAL

Designed and engineered to allow traffic to flow in a single direction, the system is mechanically activated with a counter-balanced back-up system for reliable, low maintenance operation.

## SURFACE MOUNT



No trenching, also serves as a speed bump. Install on asphalt or concrete.

### FEATURES

- Top-down design for easy maintenance
- Curved tooth, fishhook design
- Durable spring-loaded teeth with counter-balanced back-up
- Zinc plated moving parts
- Stainless steel hardware
- Built-in latch down device

### STANDARD DUTY



**Type:** Standard Duty  
**Material:** Steel Top Plate (0.25 in.)  
**Length/Weight:** 3 ft. Sections (114 lbs. ea.)  
**Load Rate:** 15,000 lbs. per Single Axle Load  
**Finish:** P PY C CY



**End Bevels:** Corrosion Resistant. Caps the End of Spike Section  
**Length/Weight:** 7 in. (26 lbs.)  
**Type:** End Bevels for Surface Mount Manual Traffic System  
**Finish:** E EY



### HEAVY DUTY

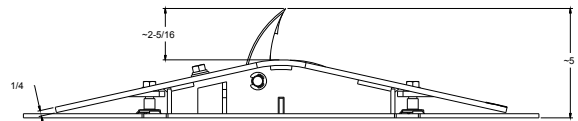


**Type:** Heavy Duty  
**Material:** Steel Top Plate (0.375 in.)  
**Length/Weight:** 3 ft. Sections (132 lbs. ea.)  
**Load Rate:** 36,000 lbs. per Single Axle Load  
**Finish:** P C

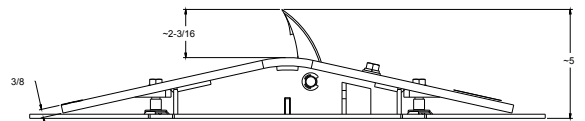


**End Bevels:** Corrosion Resistant. Caps the End of Spike Section  
**Length/Weight:** 7 in. (26 lbs.)  
**Type:** End Bevels for Heavy Duty Surface Mount Manual Traffic System  
**Finish:** End Bevel Red

### STANDARD DUTY



### HEAVY DUTY





# SURFACE MANUAL

## LOW PROFILE



**Friendly to low profile vehicles, only 4 inches tall.**  
Install on asphalt or concrete.

### STANDARD DUTY



**Type:** Low Profile Surface Mount Manual Traffic System  
**Material:** Steel Top Plate (0.375 in.)  
**Length/Weight:** 3 ft. Sections (114 lbs. ea.)  
**Load Rate:** 36,000 lbs. per Single Axle Load  
**Finish:** **P** **PY** **C** **CY**



**End Bevels:** Corrosion Resistant. Caps the End of Spike Section  
**Length/Weight:** 7 in. (26 lbs.)  
**Type:** End Bevels for Low Profile Surface Mount Manual Traffic System  
**Finish:** **E** **EY**



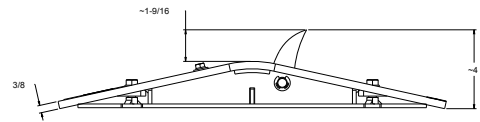
END BEVEL  
RED



END BEVEL  
YELLOW

### FEATURES

- Top-down design for easy maintenance
- Curved tooth, fishhook design
- Durable spring-loaded teeth with counter-balanced back-up
- Zinc plated moving parts
- Stainless steel hardware
- Built-in latch down device



## NON-PASSIVE



**Stops traffic in both directions.** Control box locks all spikes in up or down position.  
Install on asphalt or concrete.



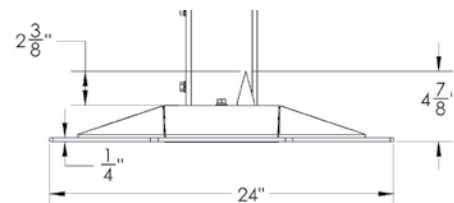
**Type:** Non-Passive Surface Manual Traffic System  
**Material:** Steel Top Plate (0.375 in.)  
**Length/Weight:** Total 11 ft. (370 lbs.) consists of (3) 3 ft. extensions  
**Load Rate:** 36,000 lbs. per Single Axle Load  
**Finish:** Powder Coated Red



**Type:** 3 ft. Extension for Non-Passive Surface Manual Traffic System  
**Length/Weight:** Can be Combined up to 24 ft. (135 lbs. ea.)  
**Load Rate:** 36,000 lbs. per Single Axle Load  
**Finish:** Powder Coated Red

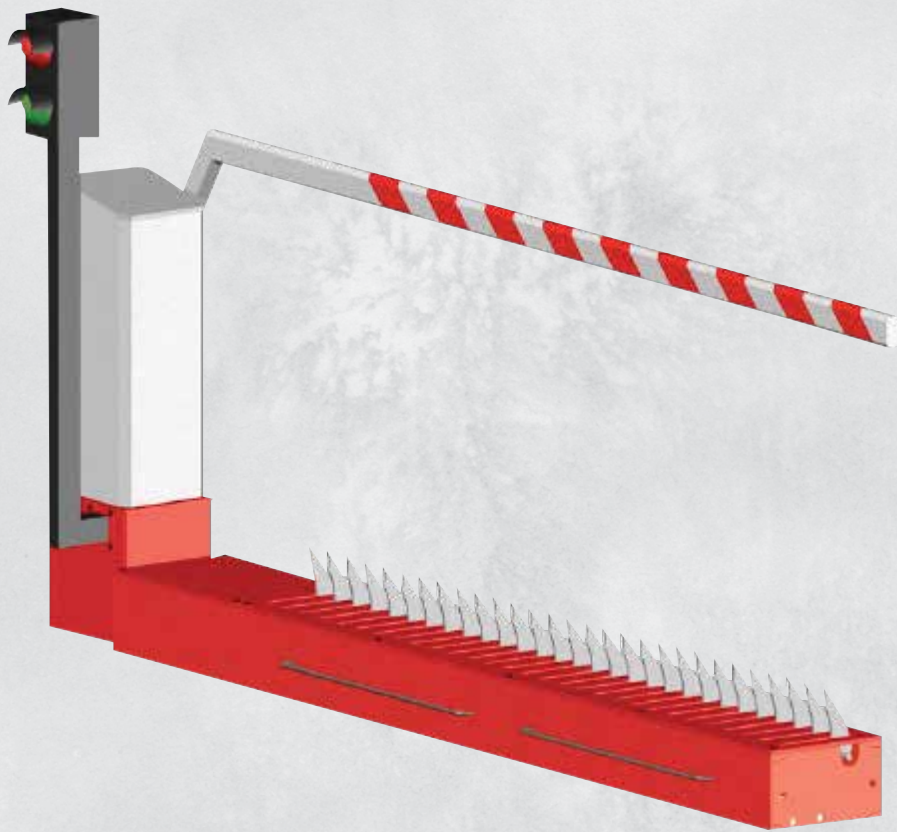
### FEATURES

- Stops unwanted entry or exit
- Modular extensions up to 24 ft.
- Top-down design for easy maintenance
- Aggressive tooth design
- Durable spring-loaded teeth with counter-balanced back-up



# MOTORIZED TRAFFIC AND PARKING SYSTEMS

Allows unrestricted passage to authorized vehicles by electro-mechanically moving the teeth up to an active or secured position, and then down. The modular system with Magnetic™ Brand Operator allows for design flexibility and is easy to install in manned or unmanned sites. This system can be installed in new or existing facilities and easily integrated with multiple access control options.



## HOW TO ORDER

1 | CHOOSE A MODEL

1 | 3 | 1 | 0 | 0 | M |

2 | SELECT A FINISH

1 | 3 | 1 | 0 | 0 | M | P |

3 | SELECT A HANDING OPERATION SYSTEM‡

1 | 3 | 1 | 0 | 0 | M | P | -L/R |

4 | SELECT A LENGTH

1 | 3 | 1 | 0 | 0 | M | P | -L15 |

5 | ORDER

To place your order visit: Dealer.LiftMaster.com

Call 800.323.2276

Email Customer.Service@LiftMaster.com

Contact your LiftMaster® Sales Representative

‡Handing is the side that operator will be installed on, dependent on the flow of traffic: (L) Left or (R) Right.

# MOTORIZED

Handing is the side that the operator will be installed on, dependent on the flow of traffic: (L) Left or (R) Right.

## FEATURES

- Top-down design for easy maintenance
- 120 volt power 50/60 Hz
- 100% duty cycle
- IP54 barrier housing (white)
- Auto-open and power failure feature
- Integrated dual-channel loop detector
- Complete VarioBoom with protected foam edge
- Integrates with all access control devices
- Modular-max. spike system length 24 ft.
- Conditioned for heater cable system



See accessory section for warning alerts and signs

## IN - GROUND



**Type:** In-Ground Motorized Traffic System

**Power:** 120 Volt, 50/60 Hz

**Handing Operation Position:**

Left or Right

**Length:** 9 12 15 18 ft.

Sections

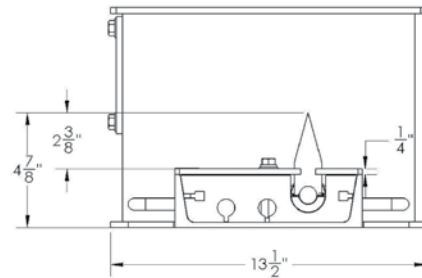
**Finish:** P C\*



**Type:** 3 ft. Extension for In-Ground Motorized Traffic System

**Length/Weight:** Can be Combined up to 24 ft. (90 lbs. ea.)

**Finish:** P C\*



## SURFACE



**Type:** Surface Mount Motorized Traffic System

**Power:** 120 Volt, 50/60 Hz

**Handing Operation Position:**

Left (L) or Right (R)

**Length:** 9 12 15 18 ft.

Sections

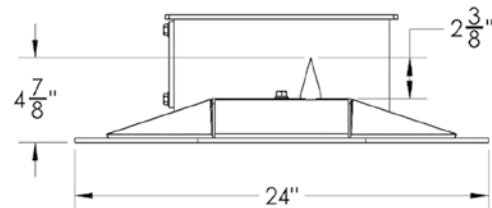
**Finish:** P C\*



**Type:** 3 ft. Extension for Surface Mount Motorized Traffic System

**Length/Weight:** Can be Combined up to 24 ft. (135 lbs. ea.)

**Finish:** P C\*





# MANUAL BARRIER TRAFFIC AND PARKING SYSTEMS

Non-motorized traffic control for unmanned entrances that do not require credentialed access.



## HOW TO ORDER

### 1 | CHOOSE A MODEL

**1 4 0 0 0 N -12**

### 2 | ORDER

To **place your order** visit:  
[Dealer.LiftMaster.com](http://Dealer.LiftMaster.com)

**Call** 800.323.2276

**Email** [Customer.Service@LiftMaster.com](mailto:Customer.Service@LiftMaster.com)

**Contact** your LiftMaster® Sales Representative

# LIFT MANUAL BARRIER

Available in in-ground or surface mount versions, these lift gates are factory balanced and feature a lightweight round aluminum arm with red/white stripes.

## FEATURES

- 4 in. square galvanized steel post
- 1.875 in. OD pipe aluminum arm
- Pivot assembly with LiftMaster hinge
- May be padlocked in the open or closed position

## IN - GROUND



An easy to install, effective solution.



**1 4 0 0 0 N -12**

**Type:** In-Ground Manual Lift Barrier Gates  
**Color:** Red and White  
**Length/Weight:** 12 ft. (190 lbs. ea.)

**1 4 0 0 0 N -16**

**Type:** In-Ground Manual Lift Barrier Gates  
**Color:** Red and White  
**Length/Weight:** 16 ft. (207 lbs. ea.)

**1 4 0 0 0 N -20**

**Type:** In-Ground Manual Lift Barrier Gates  
**Color:** Red and White  
**Length/Weight:** 20 ft. (233 lbs. ea.)

**1 4 0 0 0 NR**

**Type:** In-Ground Manual Lift Barrier Receiver Post  
**Color:** Red  
**Weight:** 40 lbs. ea.  
**Mounting:** 0.38 in. plate, 8 x 8 in. thick with four 0.5 in. holes for mounting

Barrier Receiver Post required with all In-Ground Manual Lift Barrier Gates over 15 ft. long.

## SURFACE MOUNT



Easy installation for existing or new applications.



**1 4 0 0 0 S -12**

**Type:** Surface Manual Lift Barrier Gates  
**Color:** Red and White  
**Length/Weight:** 12 ft. (190 lbs. ea.)  
**Mounting:** 0.38 in. plate, 8 x 8 in. thick with four 0.5 in. holes for mounting

**1 4 0 0 0 S -16**

**Type:** Surface Manual Lift Barrier Gates  
**Color:** Red and White  
**Length/Weight:** 16 ft. (207 lbs. ea.)  
**Mounting:** 0.38 in. plate, 8 x 8 in. thick with four 0.5 in. holes for mounting

**1 4 0 0 0 S -20**

**Type:** Surface Manual Lift Barrier Gates  
**Color:** Red and White  
**Length/Weight:** 20 ft. (233 lbs. ea.)  
**Mounting:** 0.38 in. plate, 8 x 8 in. thick with four 0.5 in. holes for mounting

**1 4 0 0 0 SR**

**Type:** Surface Manual Lift Barrier Receiver Post  
**Color:** Red  
**Weight:** 40 lbs. ea.  
**Mounting:** 0.38 in. plate, 8 x 8 in. thick with four 0.5 in. holes for mounting

Barrier Receiver Post required with all Surface Mount Manual Lift Barrier Gates over 15 ft. long.

# SWING/IN-GROUND MANUAL BARRIER

Non-motorized means of traffic control, consisting of galvanized pipe and pivot assembly with a LiftMaster® Hinge.

## FEATURES

- Galvanized pipe
- Posts 2.875 in. OD pipe
- Gates 1.875 in. OD pipe
- Pivot assembly with LiftMaster hinge
- May be padlocked in the open or closed position

## SINGLE ARM



Ideal for single lane driveways.



1 4 0 1 0 -12

**Type:** Single Leaf Manual Swing Barrier Gates  
**Dimensions:** 12 ft.  
**Weight:** 145 lbs. ea.  
**Finish:** Galvanized

1 4 0 1 0 -16

**Type:** Single Leaf Manual Swing Barrier Gates  
**Dimensions:** 16 ft.  
**Weight:** 167 lbs. ea.  
**Finish:** Galvanized

1 4 0 1 0 -20

**Type:** Single Leaf Manual Swing Barrier Gates  
**Dimensions:** 20 ft.  
**Weight:** 188 lbs. ea.  
**Finish:** Galvanized

1 4 0 3 0 R

**Type:** Manual Swing Barrier Gate Receiver Post  
**Dimensions:** 6 ft.  
**Weight:** 40 lbs. ea.  
**Finish:** Galvanized

Required for use with Single Leaf Swing Gate; recommended for use with any gate in the open position.

## DUAL ARMS



Best used for wide driveways.



1 4 0 2 0 -20

**Type:** Double Leaf Manual Swing Barrier Gates  
**Total Dimensions:** 20 ft.  
**Weight:** 275 lbs. ea.

1 4 0 2 0 -24

**Type:** Double Leaf Manual Swing Barrier Gates  
**Total Dimensions:** 24 ft.  
**Weight:** 320 lbs. ea.

1 4 0 2 0 -30

**Type:** Double Leaf Manual Swing Barrier Gates  
**Total Dimensions:** 30 ft.  
**Weight:** 370 lbs. ea.

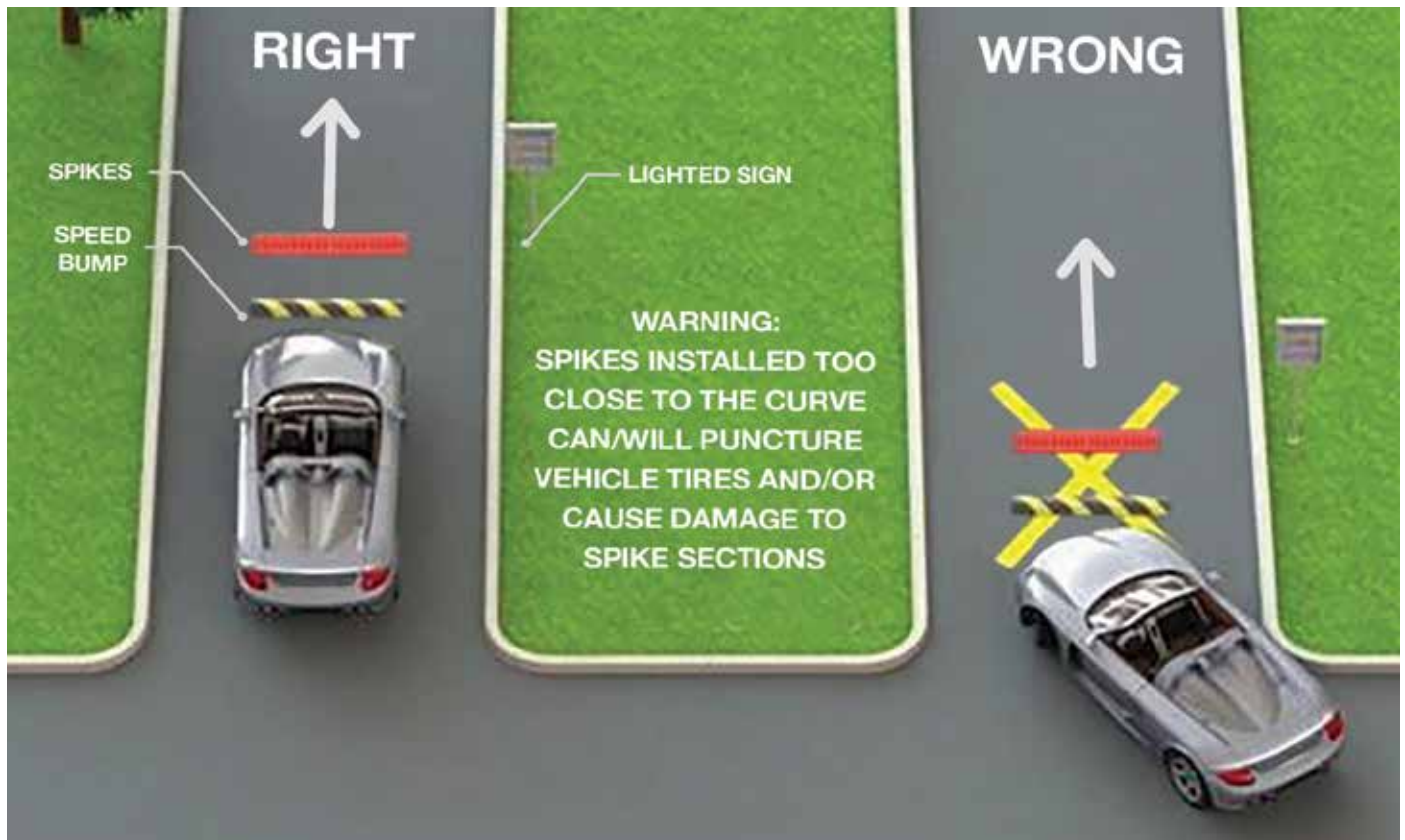
The Manual Swing Barrier Gate Receiver Post (14030R) is recommended for use with any gate in the open position.



# ACCESSORIES AND INSTALLATION

Warning signs must be used in all traffic spike applications. They warn drivers of speed, direction and potential damage to their vehicles.

LiftMaster provides a complete line of warning signs, signal lights and speed bumps to complete your installation.



## SYSTEM SAFETY REQUIREMENTS

- | Maximum speed 5 mph
- | Tires must pass over the unit so that the tire is parallel to teeth and not at an angle
- | Warning signs required
- | Locating and installing a Traffic Spike incorrectly or not using warning signs voids any warranty

# WARNING ALERTS AND TRAFFIC SIGNS

Ensures that users understand the potential for danger as they approach the traffic system.

## 2-SIDED TRAFFIC SIGN AND MOUNTING POST

**Must be used with every traffic spike system.** Use mounting post with warning signs.

### FEATURES

- 18 in. x 24 in. x 0.08 in.
- EGP reflective aluminum
- Heavy duty steel frame, with black powder coat finish

**1 4 1 0 0**

**Type:** Lighted Warning Sign for Manual Traffic Systems  
**Material:** Aluminum Sign with Heavy Duty Powder Coated Steel Frame  
**Color:** Red/Green  
**Frame Color:** Black  
**Dimensions:** Sign: 18 x 24 in. Frame: 22.25 x 28.88 in.  
**Power:** 110 VAC  
**Weight:** 40 lbs. ea.

**1 4 1 1 0**

**Type:** Reflective Warning Sign for Manual Traffic Systems  
**Material:** Aluminum Sign with Heavy Duty Powder Coated Steel Frame  
**Color:** Red/Green  
**Frame Color:** Black  
**Dimensions:** Sign: 18 x 24 in. Frame: 22.25 x 28.88 in.  
**Weight:** 38 lbs. ea.

**1 4 1 1 5**

**Type:** Lighted Warning Sign for Automated Traffic Systems  
**Material:** Aluminum Sign with Heavy Duty Powder Coated Steel Frame  
**Color:** Red/Red  
**Frame Color:** Black  
**Dimensions:** Sign: 18 x 24 in. Frame: 22.25 x 28.88 in.  
**Power:** 110 VAC  
**Weight:** 40 lbs. ea.

**1 4 1 5 0**

**Type:** Reflective Warning Sign for Automated Traffic Systems  
**Material:** Aluminum Sign with Heavy Duty Powder Coated Steel Frame  
**Color:** Red/Red  
**Frame Color:** Black  
**Dimensions:** Sign: 18 x 24 in. Frame: 22.25 x 28.88 in.  
**Weight:** 38 lbs. ea.

**1 4 1 6 0 N**

**Type:** In-Ground Mounting Post for Warning Sign  
**Color:** Black  
**Dimensions:** 72 in. height, 2 x 2 in. round post  
**Weight:** 18 lbs. ea.

**1 4 1 6 0 S**

**Type:** Surface Mount with Flange Mounting Post for Warning Sign  
**Color:** Black  
**Dimensions:** 48 in. height, 4 x 4 in. flange, 2 x 2 in. round post  
**Weight:** 16 lbs. ea.



# WARNING ALERTS AND TRAFFIC SIGNS

## LED STOP-GO SIGNAL

For use with Motorized Traffic System.

1 3 3 4 0 P

**Type:** LED Stop-Go Signal Light with Heavy Duty Gooseneck Post/Mounting Bracket  
**Power:** LED Low Voltage 12-24 AC/DC  
**Color:** Black  
**Dimensions:** Post: 2 x 3 in., 63 in. height, Enclosure: 5 x 10 x 2.75 in., Lenses: 4 in. diameter  
**Finish:** UV Resistant Housing



### FEATURES

- 4 in. diameter lenses
- Entire enclosures 5 in. x 10 in. x 2.75 in.
- UV resistant housing
- Built to withstand demanding weather
- Easy installation
- Heavy duty gooseneck post with mounting bracket, black finish

## CONCRETE INSTALLATION OF SURFACE MOUNT SPIKES

To complete your installation.



1 4 2 5 0

**Type:** Epoxy  
**Installation:** Asphalt or Concrete  
**Dimensions:** 1 Gallon  
**Weight:** 8 lbs. ea.



C M P

**Type:** LDT Anchor Bolts  
**Installation:** Surface Mount  
**Dimensions:** 0.38 in. x 4 in.  
**Contents:** Package of 8, single piece (14320T)



D B 3 8

**Type:** Drill Bit SDS plus 0.38 in.  
**Installation:** Does Not Require Nuts/Washers  
**Dimensions:** Extra-large hex washer head

### FEATURES

- Easy to install
- Does not require nuts and washers
- Extra-large hex washer heads increased bearing surface with the fixture being fastened



# HEATERS

To keep your system working in cold weather, these fully sealed and moistureproof cables are flexible and fire resistant.

**C H T R -**

**Type:** Mineral Insulated Snow Melting Cable Assembly

**Power:** 120 Volt

**Lead:** Standard cold, 20 ft. length

**Content Included:** NEMA 4X thermostat, heater embedded plaque/marker

**Length:** 18 24 30 36 48 ft.

**Installation:** All in-ground and surface mount traffic systems, measurement of heater cable is twice the length of the traffic system.

## FEATURES

- Stainless steel
- Standard cold lead length 20 ft.
- Flexible
- Fire resistant
- No degradation



# SPEED BUMPS

Ideal to slow vehicles when approaching traffic systems or when speed needs to be controlled.

**1 6 1 0 0 -6**

**Type:** Speed Bump - 6 ft. length  
**Material:** 100% Recycled Rubber  
**Color:** Black and Yellow  
**Installation:** Asphalt or Concrete  
**Dimensions:** 6 ft. L x 12 in. W x 2.25 in. H  
**Weight:** 51 lbs. ea.

**1 6 1 0 0 -4**

**Type:** Speed Bump - 4 ft. length  
**Material:** 100% Recycled Rubber  
**Color:** Black and Yellow  
**Installation:** Asphalt or Concrete  
**Dimensions:** 4 ft. L x 12 in. W x 2.25 in. H  
**Weight:** 32 lbs. ea.



**1 6 1 0 0 E**

**Type:** End Cap for Speed Bumps  
**Material:** 100% Recycled Rubber  
**Dimensions:** 9 in. L x 12 in. W x 2.25 in. H  
**Weight:** 5.5 lbs. ea.

**1 6 7 0 0 R**

**Type:** Rebar Spike for Speed Bumps  
**Installation:** Asphalt Only  
**Dimensions:** 14 in.

**Bump MP**

**Type:** Hardware for Speed Bumps  
**Contents:** 4 each - 6 in. lag bolt, shield and washer (one package needed for each speed bump)

# ENSURE A SAFE INSTALLATION AND REDUCE LIABILITY

## DO'S

- Clearly warn pedestrians and drivers about the potential danger
- Install in an area with high visibility
- Install in such a way that traffic flows over teeth at a strict 90 degrees
- Leave adequate drainage channels below in-ground units
- Make sure the traffic controller you choose is appropriate for the application
- Add speed bumps before traffic controllers when additional speed control is required and/or desired
- Consult manufacturer for optimal placement of units, based on varying road widths

## DON'TS

- Don't install on a curve
- Don't install on uneven or non-level surfaces
- Don't install on inappropriate road surface such as brick, dirt or gravel
- Don't install in areas that have a lot of dirt, debris and gravel
- Don't forget to properly maintain the units





# HOW TO ORDER

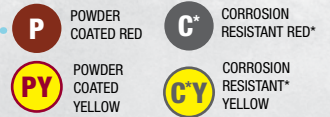
## 1 | CHOOSE A MODEL

1 | 2 | 3 | 2 | 0



## 2 | SELECT A FINISH

1 | 2 | 3 | 2 | 0 | P



**Most Traffic and Parking Systems are available in several finishes.** When applicable, finishes must be selected when ordering products.

## 3 | ORDER

To **place your order** visit: [Dealer.LiftMaster.com](http://Dealer.LiftMaster.com)

**Call** 800.323.2276

**Email** [Customer.Service@LiftMaster.com](mailto:Customer.Service@LiftMaster.com)

**Contact** your LiftMaster® Sales Representative

# TOOLS AND RESOURCES

For additional information on a complete LiftMaster solution, utilize the following tools and resources.

## PRINT RESOURCES

- LiftMaster Product Catalog
- Gate Hardware Product Line

## ONLINE TOOLS

- [LiftMaster.com/TrafficSystems](http://LiftMaster.com/TrafficSystems)
- [Dealer.LiftMaster.com](http://Dealer.LiftMaster.com)
- [LiftMasterTraining.com](http://LiftMasterTraining.com)
- [Catalog.LiftMaster.com](http://Catalog.LiftMaster.com) (Product Catalog)



## PLACE YOUR ORDER TODAY.

[Dealer.LiftMaster.com](http://Dealer.LiftMaster.com) | 800.323.2276  
Email [Customer.Service@LiftMaster.com](mailto:Customer.Service@LiftMaster.com)  
Contact Your LiftMaster Sales Representative

© 2017 LiftMaster All Rights Reserved  
300 Windsor Drive, Oak Brook, IL 60523  
[LiftMaster.com](http://LiftMaster.com)  
LMGTENBROOTS 8/17

**LiftMaster**